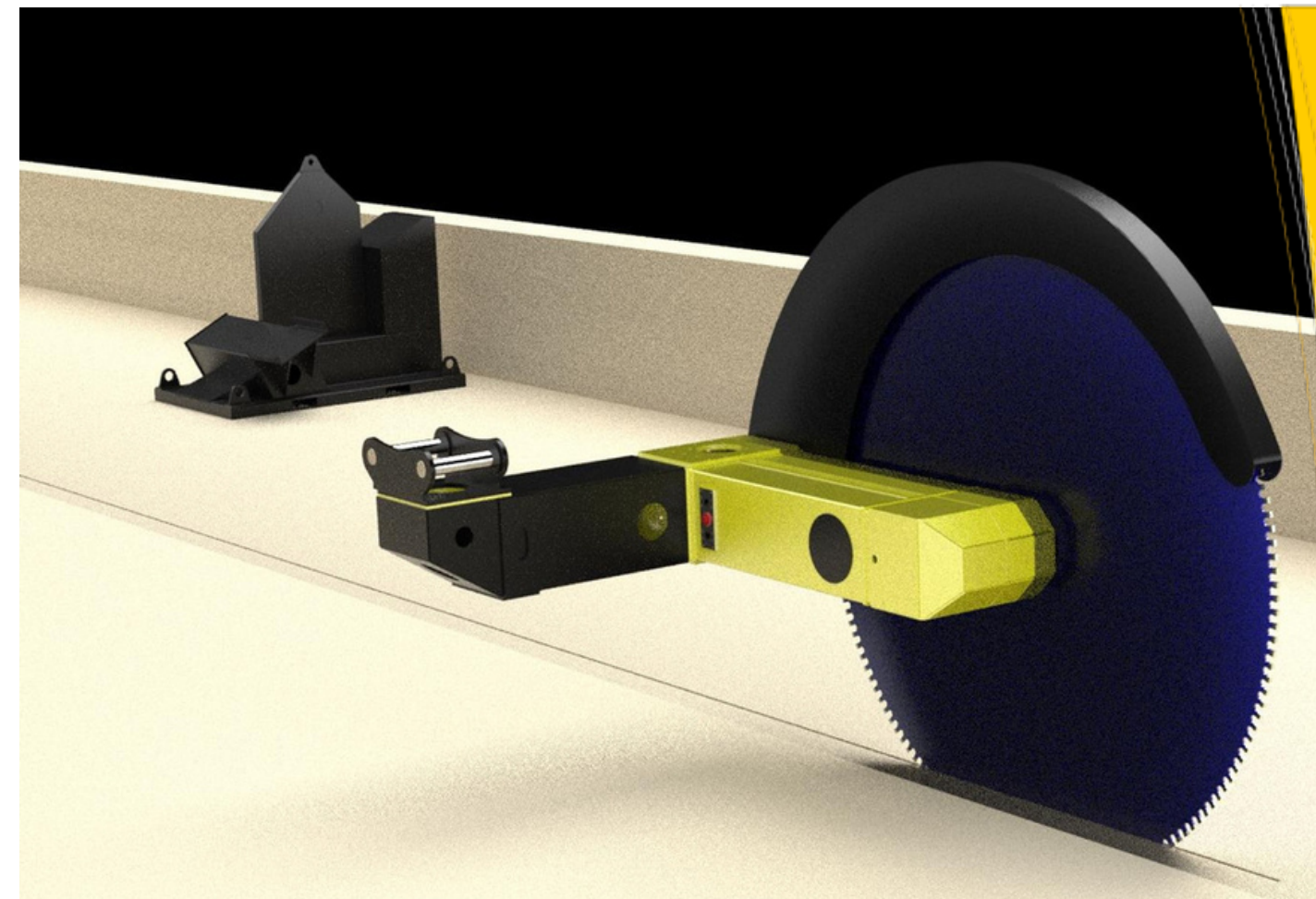


AUSTRAMAC®

POWERCUT^{Series 3000P}

Technical Specifications

Diameter Blade:	3,000 mm
Max depth of cut:	1,275 mm
Weight with stand :	2,578KG
Weight without stand :	1,819 KG
Minimum size excavator :	30 Ton
Ideal size excavator :	35 to 45
Max Continuous working pressure:	Ton 250
Peak pressure:	BAR
Minimum flow required:	350 BAR
Ideal Working Flow:	280 l/m
Displacement :	330 l/m
Type of Motor:	800 cc
Case Drain:	Radial Piston
Type of transmission:	Required
	Direct



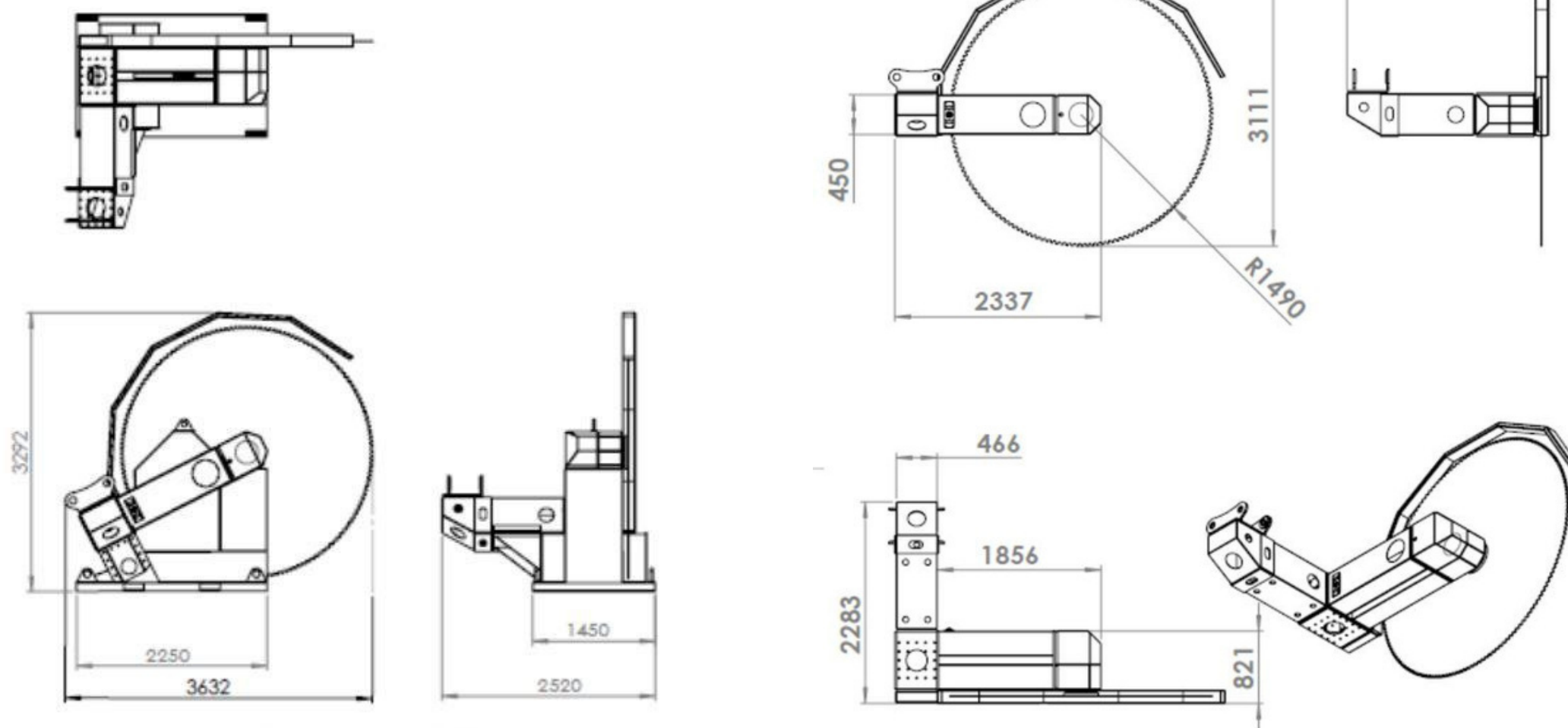
Hydraulic Diamond Rock saw attachment
for relatively low ceiling height (tunnelling)

For Excavators 30 to 50 Ton



CUSTOM SOLUTIONS

We offer Customized modifications To our standard design.



Austramac Australia Pty Ltd

77 Lakemba street, Belmore NSW 2192
Phone: (02) 9099 9774
Email: info@austramac.com.au